



Forest Service  
U.S. DEPARTMENT OF AGRICULTURE

National Forests in North Carolina

## U.S. Forest Service News Release

Media Contact:

Cathy Dowd

(202) 515-1335

cathryn.dowd@usda.gov

### Bee Rock Creek Fire Update -- April 19, 2025

**MARION, N.C., April 19, 2025** – Bee Rock Creek Fire Update – Grandfather Ranger District – McDowell County

Firefighters have achieved 27% containment on the 1,047-acre Bee Rock Creek Fire burning in steep terrain and storm debris in McDowell County near the Armstrong State Fish Hatchery. Yesterday, firefighters mopped up along Armstrong Creek Road, extinguishing hotspots to secure containment lines. Helicopters dropped water to slow fire growth in support of the firefighters working on the ground.

Data from last night's infrared flight showed heat near the south side of the Blue Ridge Parkway. This morning firefighters, including 2 Interagency Hotshot crews, investigated the area on foot and with the use of a drone but could not find a fire.

If weather conditions allow, firefighters will implement strategic firing operations to reduce the amount of unburned fuel between the fire and the Blue Ridge Parkway. Smoke from this planned event may affect McDowell, Mitchell and Yancey counties.

Firefighters use carefully planned strategic firing operations while weather conditions will keep fire behavior low. In anticipation of the strategic firing operations, firefighters have removed storm debris and constructed dozer lines from the Parkway down towards the main fire area on the east and west sides to contain the fire within this area.

The National Forests in North Carolina has issued a [closure order](#) for the area of the Bee Creek Fire. National Forest System lands between Armstrong Creek Road and the Blue Ridge Parkway are closed to entry for public and firefighter safety.

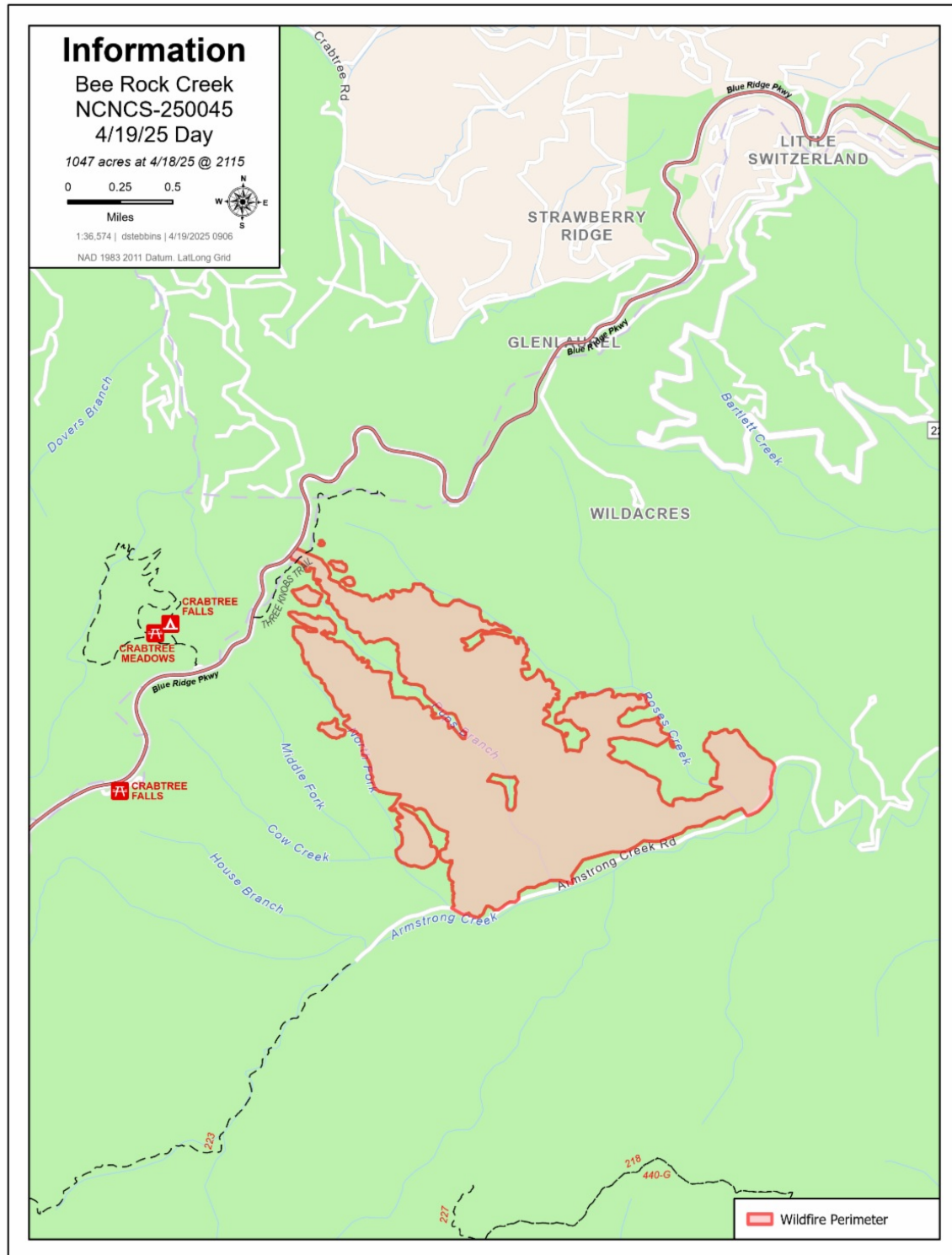
The USDA Forest Service, North Carolina Forest Service, National Park Service, McDowell County and Woodlawn Fire Department have 174 personnel working to suppress the fire and create containment lines to stop the spread of the fire.

McDowell County Emergency Management has issued an evacuation order for all residences on Wild Acres Road off of NC 226 A. Click to view [McDowell County's live evacuation map](#).

A Temporary Flight Restriction is in place over the fire area each day from 10 a.m. to midnight. See the map at [https://tfr.faa.gov/tfr3/?page=detail\\_5\\_7644](https://tfr.faa.gov/tfr3/?page=detail_5_7644). Aircraft, including drones, are prohibited from flying to provide a safe environment for firefighting. If you fly, we can't. If a drone is spotted near the fire, all aircraft are grounded until the drone is clear of the area.

Please be aware of smoke and crews in the area. Drive slowly and use caution on roads where smoke may be settling. Check air quality at <https://airquality.climate.ncsu.edu/> or <https://fire.airnow.gov>.

**For more information:**



**UNITED STATES DEPARTMENT OF AGRICULTURE  
FOREST SERVICE  
NATIONAL FORESTS IN NORTH CAROLINA,  
PISGAH NATIONAL FOREST  
GRANDFATHER RANGER DISTRICT  
FOREST ORDER# 08-11-05-25-03**

Pursuant to 16 U.S.C. § 551 and 36 CFR §§ 261.50 (a) and (b), the area of National Forest System lands in the "Bee Rock Creek Fire Area" located on the Grandfather Ranger District of the Pisgah National Forest is closed to entry. The area is closed to entering and/or being upon or present in. This order is intended to mitigate risks to public health and safety, to provide for disaster and safety operations, and to protect the resources while responding to and recovering from the Bee Rock Creek fire. This closure is effective until May 2<sup>nd</sup>, 2025, or until rescinded by an authorized Forest Service official, whichever occurs first.

The area that is closed includes National Forest System lands between Armstrong Creek Road and the Blue Ridge Parkway, as depicted on the attached map. Only National Forest System lands are impacted by this closure.

The above prohibited acts are set forth in 36 CFR section 261.53 (e) Special Closures for Public Health or Safety. It is prohibited to go into or be upon any of the areas described in this order.

Pursuant to 36 CFR, § 261.50 (e), the following persons or areas are exempt from this Order:

1. Persons with a special use permit or contract specifically authorizing the otherwise prohibited act of omission.
2. Any Federal, State, or local officer, or member of an organized rescue or firefighting force in the performance of an official duty.

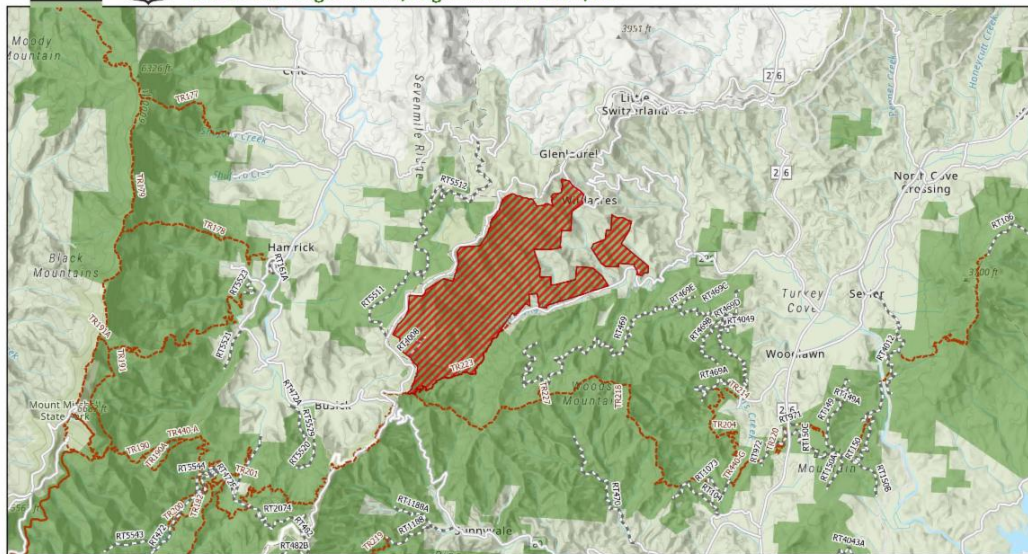
Executed in Asheville North Carolina, on April 18, 2025.

**JAMES  
JONES**

Barry Jones  
ACTING FOREST SUPERVISOR  
NATIONAL FORESTS IN NORTH  
CAROLINA

Digitally signed by  
JAMES JONES  
Date: 2025.04.18  
17:30:10 -04'00'

Violations of the above prohibition are punishable by a fine of not more than \$5000.00 for an individual and \$10,000 for an organization or imprisonment for not more than six months or both. Title 16 USC 551 and Title 18 USC 3559 and 3571.



### Content Advisory

This map is intended to depict the National Forest System Lands as they generally appear on the ground and may not be used to determine title, ownership, legal boundaries, legal jurisdiction, including jurisdiction over roads or trails, or access restrictions that may be in place on either public or private land. Obtain permission before entering private lands, and check with appropriate government offices for restrictions that may apply to public lands. Lands, roads and trails within the boundaries of the National Forest may be subject to restrictions on motor vehicle use. Obtain a Motor Vehicle Use Map, or inquire at the local Forest Service Office for motor vehicle access information. Natural hazards may or may not be depicted on the map, and land users should exercise due caution. This map may not be suitable for navigational use.

### Legend

- Closure Area
- Forest Service Land
- Non Forest Service Land
- Roads
- NFsNC Roads
- NFsNC Trails



###

USDA is an equal opportunity provider, employer and lender.

National Forests in North Carolina | 160 Zillicoa St | Asheville, NC 28801 US

[Unsubscribe](#) | [Update Profile](#) | [Constant Contact Data Notice](#)



Try email marketing for free today!